



July 29

CASEL Resource User,

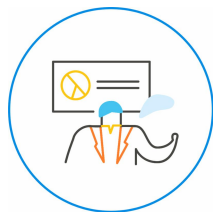
Welcome to our first quarterly email for registered users of the District Resource Center and CASEL Guide to Schoolwide SEL. A special welcome to those who joined us in person at the schoolwide SEL Summer Institute – we’re hoping this email is a way for us to stay in touch! Here, you’ll find resources for district staff in **blue** and resources for school staff in **orange**. But whether you work in a district or school or as an out-of-school time provider, it’s worth exploring them all!

This quarter, we focus on resources to help you prepare for **back-to-school** and finish the summer on a high note:

- **School Leaders:** Provide **foundational learning about SEL** to build knowledge and commitment in staff, families, and community partners.
- **District Leaders:** Finalize your **shared vision and plan for SEL** so your district has a clear path for the coming year and beyond



Did you know....?



Communication is critical to sustainable SEL! This means engaging a wide range of stakeholders, including district and school leaders and staff, families, and community partners. You’ll want to communicate about the benefits of SEL, how it will impact students, what the next steps are, and how these stakeholders can be involved.

- Learn more about [Communicating SEL as a District Priority](#)

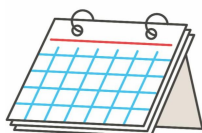
Need more support...?



Here are some tools and resources that can help you expand and grow your SEL work.

- The **SEL 101 Sample Introductory presentation** can be adapted and used to introduce SEL to staff, families, and community partners.
- The **District Action-Planning Workbook** helps district teams develop and monitor a year-long SEL implementation plan.

CHECK OUT THE LATEST



Additions and Updates

Be sure to check out the newly enhanced rubric for

Upcoming Opportunities

Regional SEL convening grants from NoVo Foundation & Education First, \$50,000-

Related Resources

Check out the Assessment

schoolwide SEL implementation! Track your goals and progress with this interactive online tool.

Visit the [Schoolwide SEL Rubric](#)

\$100,000 to create a convening to build capacity around SEL with and equity lens. [Deadline Sep 6.](#)

Webinar on sustainable funding sources for SEL work over time. *Coming in September*

Work Group's blog post by Brenda McLaughlin, Chief Impact Officer at BellXcel, about how to leverage summer time and out-of-school time as SEL time.

[Read the blog](#)

Share your feedback and insights with us!

Thank you to those who have shared their feedback about our resources! We're grateful for your input and will use it to continuously improve all our resources. If you have feedback to share about the CASEL Guide to Schoolwide SEL or the District Resource Center, simply reply to this email.

You can also contribute to our effort to enhance our resources by answering the poll in each newsletter.

Based on your current needs/strengths, which is your highest priority for the school year?

Building Foundational Plans (Focus Area 1)

Select

Adult SEL (Focus Area 2)

Select

SEL for Students (Focus Area 3)

Select

Continuous Improvement (Focus Area 4)

Select

Best,

The CASEL Team



FAQs: Schoolwide Implementation

FAQ: Districtwide Implementation