



This email is for registered users of CASEL's District Resource Center and Guide to Schoolwide SEL. Resources for school staff are in **orange** and resources for district staff are in **blue**.

July 14, 2020

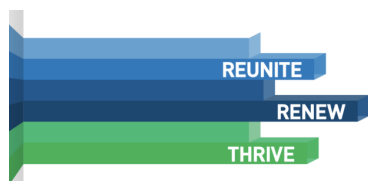
CASEL Resource User,

With the return to learning in the fall, district and school leaders, educators, and staff are facing unprecedented challenges along with new opportunities for reimagining schools. This newsletter provides resources to support you as you prepare for a new school year.

New Resource

Reunite, Renew, and Thrive: SEL Roadmap for Reopening School

This resource provides strategies and tools to position SEL as a critical underpinning in planning for the transition to a new school year.



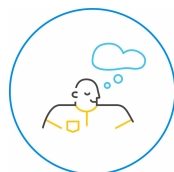
More Back-to-School Resources

- **District Leaders:** Consider how to **implement professional learning**, whether virtually or in-person, to help all staff prepare for the return to school.
- **School Leaders:** Revisit your **shared SEL vision and goals** using this tool, which has been adapted to reflect current needs.

Have you accessed the CASEL Program Guides?

If you've used either of our guides (Preschool/Elementary Guide or the Secondary Guide), we'd love to hear your feedback! Please click [HERE](#) to complete a brief survey and be entered into a drawing to win \$50 gift certificate.

You Shared... We Listened!



In the poll in our last issue, we asked how you're advancing SEL during school closures. You answered "Integrating SEL into Online Learning" (46%). Here's a resource to help with that effort:

SEL "Look-Fors" in Blended Learning: Use this note-taking template to reflect before or after you

What's New?



Check out updated guidance and resources in the District Resource Center and School Guide.

- A link to the new **digital version of CASEL's Schoolwide SEL Walkthrough Protocol**, developed with Learning Sciences International (fee-based)
- **Plan Foundational Learning for the School Community**
- Collaboration Tools for **Building SEL**

lead a learning activity.

Across the School Day and Out-of-School Time

- **Key Responsibilities of an SEL Data Lead** (an addition to our other SEL team role descriptions)

Check Out The Latest



Upcoming Opportunities

Webinar: Ensuring a Positive School Culture for the New Normal

- **July 16, 2pm ET:** Hosted by Camelot Education and featuring CASEL's Vice President of Research Dr. Robert Jagers

Education First Webinar Series: SEL for Teachers, With Teachers

- **July 16, 7pm ET:** *Restarting School - SEL Considerations for Students*
- **July 23, 7pm ET:** *Looking Back on Spring 2020 to Prepare for Fall 2020*

CASEL's Free Webinar Series: SEL as a Lever for Equity Webinar

- **July 17, 1pm ET:** *Authentic Partnerships With Families and Communities (Part IV of V)*
- **July 24, 1pm ET:** *Policy and Data Practices That Dismantle Inequities (Part V of V)*
- Watch [recordings of past webinars](#) on demand.

Webinar: CASEL's 10 Indicators of Schoolwide SEL

hosted by Learning Sciences International (LSI) & CASEL

- **July 23, 1pm ET**

Save the Date: SEL Exchange Summit

- **Oct. 15, 2020:** An innovative virtual one-day event connecting SEL advocates from across the globe.

Related Resources

Kick-Start Fall Planning: 4 Principles for Instructional Leaders, from NWEA

Back-to-School Blueprint, from Rennie Center

All of Who I Am: Perspectives from Young People About Social, Emotional, and Cognitive Learning, from America's Promise Alliance

Share Your Input With Us

As you prepare for fall, what's the most prominent way you plan to employ SEL?

As a central part of our student/family outreach strategy before the school year

Select

As part of the learning experiences we're planning for staff

Select

In the classroom as we prepare SEL-integrated and relationship practices

Select

In our surveys of the school community about their hopes, concerns, and ideas

Select

Best,

The CASEL Team



***Want to receive fewer emails?** We want to ensure you are receiving relevant information. To change your CASEL subscription settings, please click "Update Profile" at the bottom of this email.*

FAQS: Schoolwide Implementation

FAQ: Districtwide Implementation