



This email is for registered users of CASEL's District Resource Center and Guide to Schoolwide SEL. Resources for school staff are in **orange** and resources for district staff are in **blue**.

October 7, 2020

CASEL Resource User,

Last time, we shared resources for SEL planning for this unprecedented school year. In this issue, we're following up with resources to help you sustain your SEL efforts throughout the coming year.

## New Resource

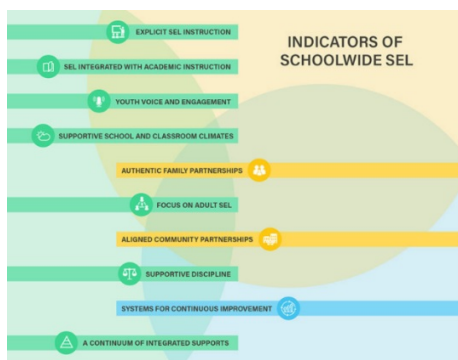
### Key Takeaways from the Live Q&A Chat: Restarting the School Year With SEL



Key Takeaways from the Live Q&A Chat for Educators

You asked, we answered! In response to your questions about **Reunite, Renew, and Thrive: SEL Roadmap for Reopening School**, we hosted a live Q&A chat with more than 30 education leaders. Download this summary of **key takeaways** from the event.

## Indicators of Schoolwide SEL - New Videos, Guidance & More



**For School Leaders and Staff:** Schoolwide SEL is evidenced by indicators of high-quality implementation across classrooms, schools, homes, and communities. Not a checklist or “to-do” list, the indicators offer observable signs of systemic implementation of SEL. **Learn more about the Indicators of Schoolwide SEL** and watch new videos on the CASEL School Guide.

**For District Leaders:** CASEL's District Resource Center provides guidance on the **Indicators of Districtwide SEL**.

A big thank you to everyone who completed the CASEL Program Guide user survey this summer! Congratulations to Ms. Fair, a teacher in Ohio, and Dr. Julie Anderson, a school psychologist in North Carolina, on winning the \$50 gift certificate raffle.

We greatly appreciate your feedback. If you have accessed the CASEL District Resource Center, please click **HERE** to complete a brief survey and be entered into a drawing **to win one of two \$50 gift certificates**.

You Shared... We Listened!

New and Updated Resources



In our last issue, we asked about the most prominent way you plan to employ SEL in the fall. You answered, “In the classroom as we prepare SEL-integrated and relationship practices” (35%).

To support this goal, consider reviewing guidance from the CASEL School Guide on **Belonging and Emotional Safety**.



Now available for purchase: **Print versions of CASEL Essentials:**

- ***The CASEL Guide to Schoolwide SEL: Essentials***. For SEL coaches and team leaders, this resource book offers a compact set of essential tools for use during professional learning or as a quick reference.
- ***Districtwide SEL Essentials for Superintendents***. Developed with AASA, the School Superintendents Association, this resource book offers the most essential guidance from CASEL’s District Resource Center, curated with district leaders in mind.

## Check Out The Latest



### Upcoming Opportunities

#### **CASEL Webinar: A (Re)introduction to SEL: CASEL’s Definition and Framework**

- **Oct. 9, 1pm ET:** Hosted by CASEL, recommended whether you are experienced with or new to SEL.

#### **SEL Exchange Virtual Summit**

- **Oct. 15, 2020, 12:00-4:00 pm ET:** An innovative virtual four-hour event on Catalyzing Our Commitment to Youth.

#### **Free Online Course: SEL for Educators**

- **Oct. 5-Dec. 22, 2020 (Registration will remain open until Nov. 30):** Offered by the Friday Institute. Earn a certificate for 25 or more professional learning hours by successfully completing the course requirements.

#### **Show+Tell: Transforming Wellbeing Through Social and Emotional Development**

- **Oct. 20, 3pm-4:30pm ET:** An online interactive event showcasing the most promising innovations in early childhood social and emotional development.

#### **Upcoming: Professional Learning from CASEL, January, 2021**

- Did you miss our four-part professional learning series on schoolwide SEL? We’re offering it again in January. [Sign up to receive early notice about registration.](#)

### Related Resources

#### **Kick-Start Fall Planning: 4 Principles for Instructional Leaders**, from NWEA.

**Emerging Insights: Advancing SEL as a Lever for Equity and Excellence**, a CASEL report by Justina Schlund, Dr. Robert J. Jagers, and Melissa Schlinger.

**It’s Time to Rethink How Schools Use Data to Implement SEL**, by CASEL’s Director of Research Partnerships Ally Skoog-Hoffman. *Education Dive*.

**Report: Building a Grad Nation**, by Civic and the Everyone Graduates Center at the Johns Hopkins University School of Education. Report on the campaign goal of a national on-time graduation rate of 90 percent.

**Teaching Tolerance Resource Page: Race & Ethnicity**. Resources to prepare students to live and work together in a diverse world.

**Support for Teachers During COVID-19**, from Facing History and Ourselves.

## Share Your Input With Us

### How helpful have you found CASEL's guides and tools to be during COVID?

Please select one:

Not Helpful

Select

Somewhat Helpful

Select

Very Helpful

Select

Best,

*The CASEL Team*



***Want to receive fewer emails?** We want to ensure you are receiving relevant information. To change your CASEL subscription settings, please click "Update Profile" at the bottom of this email.*

FAQs: Schoolwide Implementation

FAQ: Districtwide Implementation